

# MULTI-FAMILY DEVELOPMENT

## **16 PARK INDIANAPOLIS, INDIANA**

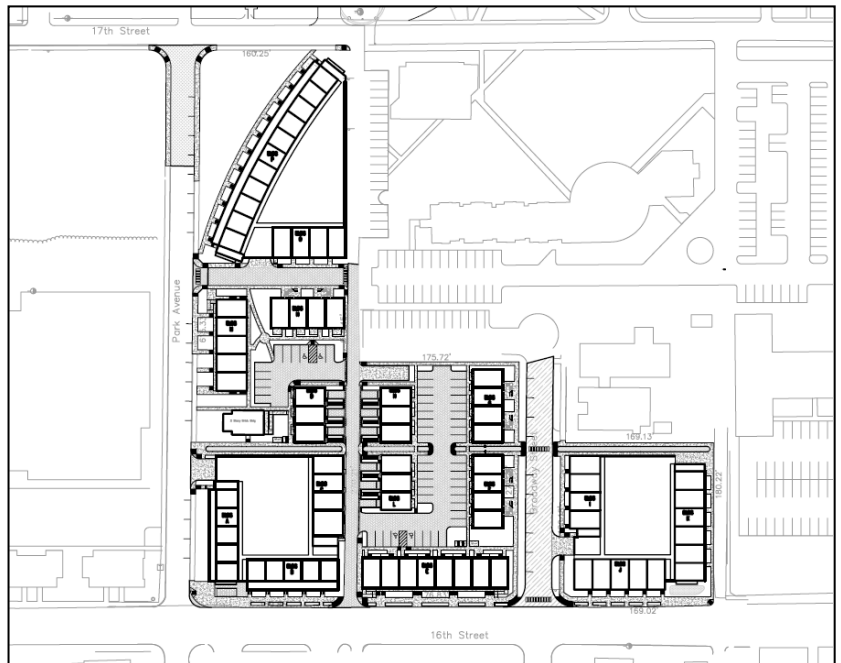
---

### Description:

*The project consisted of the site design of a multi-family redevelopment project containing 16 apartment buildings, roadways, and parking areas totaling 155 units on 4+/- acres in Indianapolis.*

### Services Provided:

- *Site Feasibility & Due Diligence*
- *Zoning Assistance*
- *Surveying*
- *Site Design / Civil Engineering*
- *Drainage Design*
- *Sustainable "Green" Design*
- *Permitting*
- *Project Coordination*



### Notable Characteristics:

The 16 Park project is a redevelopment of the former Caravelle Commons apartment community in Indianapolis. The Indianapolis Housing Agency wanted to take the aging Caravelle Commons and convert it to a vibrant and modern space, all the while the keeping the current occupants in mind. This presented several challenges to the project including the design of drainage, alleys, roadways, parking and utilities within a constricted area. The project also presented the use of various sustainable or "green" design methods. Therefore, rain gardens, bio-swales, rain barrels, vegetative roofs, underground detention, and pervious pavers were all incorporated into the design.

